

Hello!

Welcome to the largest voluntary crime-prevention movement in England and Wales. We are thrilled to have you on board.



The first Neighbourhood Watch group was set up in the UK in 1982, and since then, we have gone from strength to strength, celebrating our 40th anniversary in 2022.

We have set ourselves ambitious goals. By 2025, we want to be:

- the authoritative voice on community-based crime prevention
- the first step for neighbours to connect with each other and other groups in their area
- a recognised contributor to community health and wellbeing.

What does this mean for you? As a member, we can provide you with the advice and support you need to keep you and your neighbours safe, increase community spirit and reduce loneliness and isolation.

Neighbourhood Watch is about looking out for your neighbours. We encourage you to do this in simple ways such as keeping an eye on a neighbour's property while they are away, joining a local litter pick, or sharing our crime prevention advice. There are so many ways to look out for neighbours – it could be as simple as keeping in contact with those who may be lonely or isolated.

Neighbourhood Watch began in the US in response to violence against women and girls, while in the UK it started in response to a spate of burglaries. Whatever the crime type, Neighbourhood Watch's model works. These days cybercrime is more of a threat than physical crime for a rising number of households across England and Wales. We tackle traditional crimes, such as antisocial behaviour, burglary, and theft, and through our Cyberhood Watch and Communities That Care initiatives, we address cybersecurity and other scams by providing resources, information, and practical advice for our members.

We have so much to share with you. Some is covered in this welcome pack, but when you have time to sit back with a nice cup of tea, browse through our website ourwatch.org.uk to find out more about Neighbourhood Watch and **how we can help you to help your community.**



IAN BRETMAN
CHAIR OF NEIGHBOURHOOD WATCH



JOHN HAYWARD-CRIPPS
CEO OF NEIGHBOURHOOD WATCH

ourwatch.org.uk

Neighbourhood Watch is a grassroots, volunteer-led **CHARITY**



We bring neighbours together to create safer, stronger and active communities. Being neighbourly, community focused, inclusive, proactive, trusted and collaborative are at our core of all we do.

HOW DO WE OPERATE?

LOCALLY

Anybody can be a member of Neighbourhood Watch and receive information and support from the movement.

Many of our members are part of a local group and work together to help keep themselves and their neighbours safe, improve community cohesion, and reduce loneliness and isolation.

Neighbourhood Watch groups are run by volunteer Coordinators to help make their area a better and safer place to live.

Groups can be people who live on the same street, or have the same interests, or online social media groups covering whole areas.

Groups are most effective when working in partnership with other local groups and organisations such as the local council.

Many successful groups have a close working relationship with their local **Neighbourhood Policing Team**, and share information about crime and community concerns in the area with them.

The police often support their Neighbourhood Watch groups by providing information about crime trends in the area and expert advice on how to keep safe.

REGIONALLY

Neighbourhood Watch Associations, run by local volunteers, are in most police force areas.

They provide training, support materials and practical help to Coordinators. They also campaign on specific issues and initiate projects to support their local groups.

They promote the charity to residents and local partners.

ENGLAND AND WALES

Neighbourhood Watch Network, the umbrella charity for schemes in England and Wales, provides support to volunteers to help them diversify and develop the movement.

Neighbourhood Watch Network's website has a wide range of crime prevention and community development information to support volunteers and members across England and Wales.

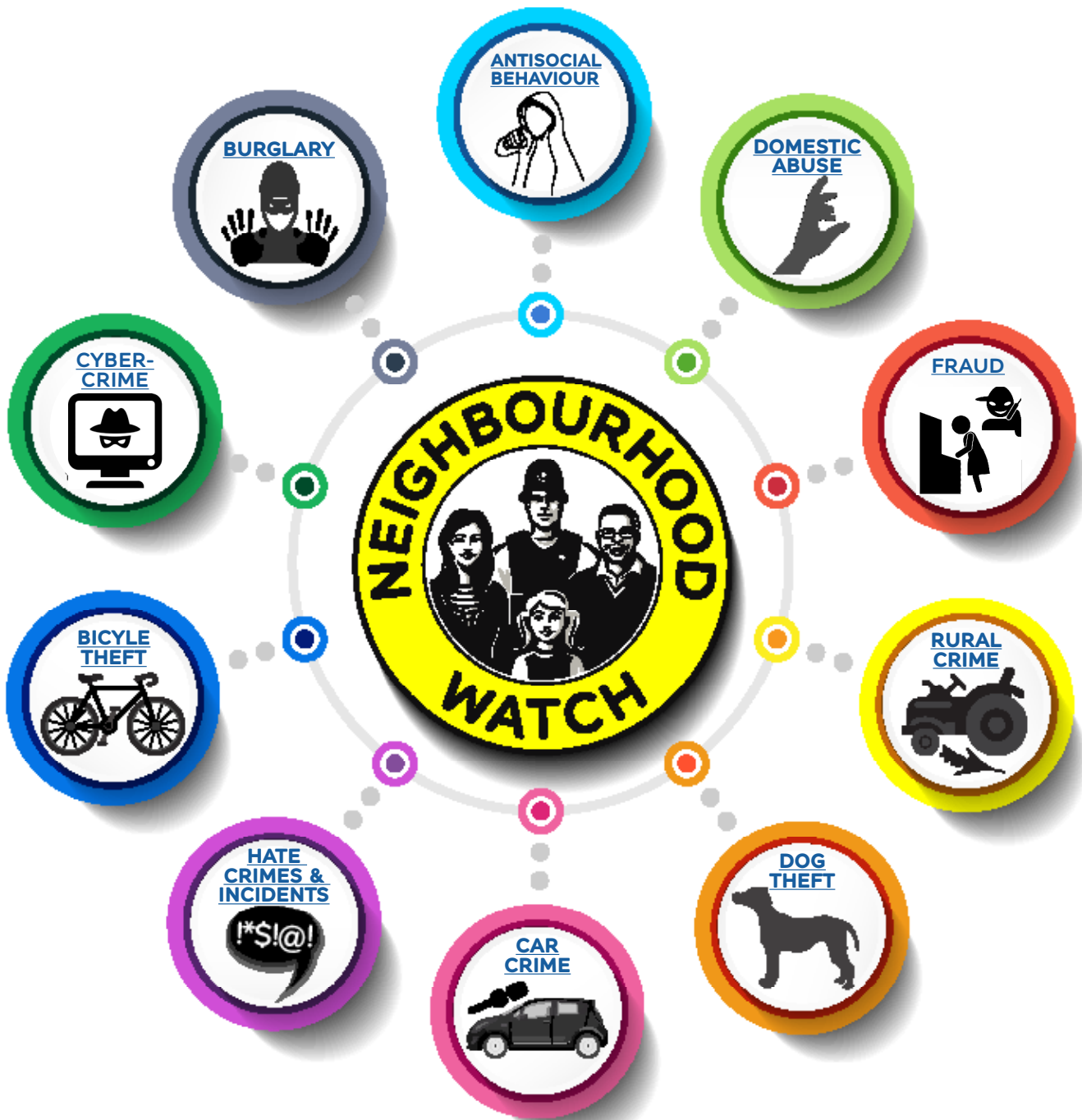
We run national campaigns, webinars, seminars and workshops, awareness weeks, national partnerships, a knowledge hub, and training. We also provide the messaging and scheme management system used by volunteers and seek discounts for members.



ourwatch.org.uk

By working together we can **REDUCE CRIME**

Click on a crime type to learn more.



We offer [crime prevention advice](#) on a wide range of crime types affecting communities, with resources to share with others. We work in close partnership with experts to continually develop our crime prevention website pages and offer further advice to the public through campaigns and our free webinar series. We also have information on [youth isolation](#) and [reducing vulnerability](#) to help reduce risk within communities.

ourwatch.org.uk

Join a local group to connect with your **COMMUNITY**



Neighbourhood Watch groups will often be able to advise you about local community initiatives you can get involved with. Simply [enter your postcode](#) to find groups in your area.

If there is no active group covering your postcode, consider starting one. It's not as daunting as it sounds and we have a [wealth of advice](#) to get you started and a Knowledge Hub forum for you to connect with Coordinators in other areas.

If you prefer to connect with others online, you could join (or start) a Neighbourhood Watch social media group, such as on Facebook or WhatsApp. There are plenty out there already to inspire you.

Did you know... established community groups, such as a faith groups, resident associations, support groups or other charities, can join Neighbourhood Watch as an affiliate member? Contact enquiries@ourwatch.org.uk to find out more.

GET INVOLVED WITH YOUR GROUP

You can give as much or as little time as you like to Neighbourhood Watch.

- **Display** our street signs and window stickers to deter criminals
- **Join in** with, or organise, events such as a [litter pick](#), a [street party](#), or an [environmental visual audit](#)
- **Reduce isolation** by setting up a neighbourhood [Calling Tree](#)
- **Support** those who are vulnerable and isolated in your community through challenging times such as floods or pandemics
- **Run a [fundraiser](#)** for your local group, like a street sale, pub quiz or family fun day
- **Tackle cybercrime** by becoming a [Cyberhood Watch Ambassador](#)
- **Raise awareness** by sharing [crime prevention advice](#) with your community
- **Beat scammers** by becoming a [Communities That Care](#) Fraud Champion
- **Network** with other local groups who can support your community activity
- **Become a [Community Champion](#)** to address the community issues that are important to you
- **Be visible online** by engaging with our campaigns and posts on social media



ourwatch.org.uk

DOES IT WORK?



The short answer is YES!

There is a clear link between Neighbourhood Watch and how safe and connected people feel.

Our Neighbourhood Watch Crime and Community surveys show that members are more positive about levels of crime than non-members and significantly more likely to be satisfied with their personal safety.

They also show that Neighbourhood Watch is an effective means of raising people's awareness about crime prevention and encouraging people to take action to protect themselves.

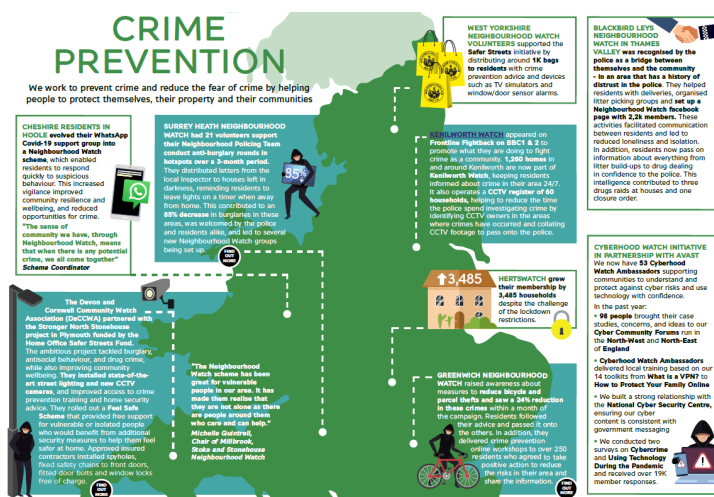
The majority of members, and over half of non-members living in Neighbourhood Watch areas, receive our crime prevention information, with a high proportion regularly acting on the advice they receive. Most crime is opportunistic so acting on simple, practical advice can reduce opportunities greatly.

The surveys demonstrate that Neighbourhood Watch improves how people feel about their neighbours and increases neighbours' willingness to help each other out.

Members are consistently more likely than non-members to feel part of their neighbourhood, to feel they can trust people who live in the area, to perceive there are people who would be there for

them if they needed help and less likely to feel left out, isolated or lonely in their local area.

Our Impact Reports demonstrate how the continued hard work and dedication of our 90,000 volunteers and 2.3 million household members is having a real impact in their communities.



DONATE

As a national charity, we provide resources, tools and events to support our members in keeping their communities safe, inclusive and vibrant places to live.

Membership of Neighbourhood Watch is free, but we rely on your generosity to keep doing what we do. Please consider a **donation** to help us continue this vital work for another 40 years and more.

We encourage you to visit [our website](https://ourwatch.org.uk) to find out more about reducing crime, membership, volunteering, campaigns, partnerships, newsletters, press release, webinars and more. You can also visit our [FAQ's](https://ourwatch.org.uk/faq) or for any other queries contact us at enquiries@ourwatch.org.uk or on 0116 402 6111.

ourwatch.org.uk

