

## Would your Association or Club benefit from a crime prevention talk?

For a small donation, The Bobby Scheme are happy to come along and give your group an informative, interesting talk on scam prevention and ways to stay safe at home, whilst you are out and about or online. The Bobby Scheme offer practical advice with demonstrations of how some devices work, answering questions and giving the opportunity to book a home visit or purchase individual items.

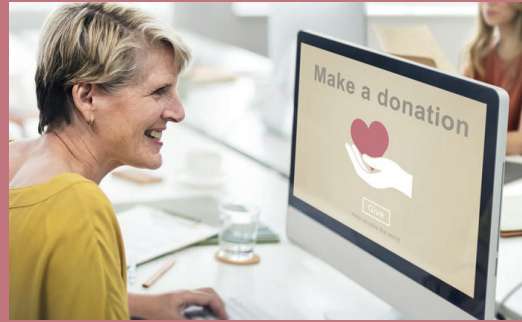


# KEEPING OLDER AND VULNERABLE PEOPLE SAFE IN THEIR OWN HOME

Supporting Victims in Cambridgeshire & Peterborough

THE BOBBY SCHEME operates as a small charity which relies solely on donations and funding. In order to fulfil this invaluable service which is the first practical help offered to victims we are always looking for ways in which to raise money.

[www.thebobbyscheme.org](http://www.thebobbyscheme.org)



### The CAMBRIDGESHIRE POLICE SHRIEVALTY TRUST



Registered Charity Number 1074992

If you would like to donate, organise an event or partner to delivery any form of crime prevention to your community **WE NEED TO HEAR from YOU!!**

If your business would like to Partner with us or Sponsor us please call us Today.

[www.thebobbyscheme.org](http://www.thebobbyscheme.org)



Yaxley Police Station, 1 Queen Street, Yaxley, Cambridgeshire, PE7 3JE

Tel: 01480 413311 • Mob: 07866 602100

Email: [info@thebobbyscheme.org](mailto:info@thebobbyscheme.org)

Web: [www.thebobbyscheme.org](http://www.thebobbyscheme.org)



The home is where people should expect to feel safe and secure – it is the one place where they have a right to feel safe.

## Who are we?

The Bobby Scheme is a small local charity established in 2001 by The Cambridgeshire Police Shrievally Trust to keep older and vulnerable people safe in their own homes by improving their home security and reducing crime and the fear of crime. To date we have secured the homes of over 37000 victims in Cambridgeshire and Peterborough. That equates to approximately 50 homes per week and this number is rising!

## What we do

The Bobby Scheme operates with 4 staff. The scheme Co-Ordinator manages the referrals which are received by Cambridgeshire constabulary and various other agencies such as Age UK, the Local Authorities and Trading Standards, to name but a few.

There are 2 Crime Prevention Advisors/handyman who visit the homes of victims who are aged 60 years or over and cover Cambridgeshire and Peterborough areas.

Security devices such as door chains, window alarms, locks, bolts, external mailboxes, spy holes and similar items are supplied and installed. Crime prevention advice, information and guidance is given regarding home security, doorstep crime, rogue traders, nuisance calls, scams, and cybercrime. All staff are trained and have local knowledge to signpost, giving renewed confidence and reassurance to cope and recover from recent trauma. The Trust Manager oversees the day to day running of the Scheme.

This service is free to all victims and all costs are covered by the charity.



## How can we help?

If you have been a victim, Cambridgeshire Constabulary will ask you if you would like to be referred to the scheme. You will be contacted, and a visit arranged for you at your home at a time convenient to you. Alternatively, you can contact us direct.

The service we offer to victims is free of charge and the benefits are invaluable. Crime and fear of crime can have a devastating, negative impact. The Bobby Scheme responds very quickly.

Bobby Scheme feedback demonstrates that beneficiaries feel much safer, confident, and reassured with a repeat victimisation rate of less than 1%.

The Bobby Scheme helps victims of burglary, theft and of other crimes to remain in their home, to recover from trauma and to begin the journey of moving forward, rebuilding and taking control of their lives.



## Not a Victim of Crime?

Has the area that you live in been recently targeted in a negative manner?

Are you feeling vulnerable, insecure, or frightened?

Reduce your chances of becoming a victim! If you are aged 65 or over or disabled and would like a fully home security visit from the one of the Bobby Scheme advisors, we ask for a recommended donation of £65 towards the charity's costs.



## We Fit Keysafes & Video Doorbells & Cameras

Do you have family, carers or friendly neighbours who could benefit from being a keyholder with minimal fuss?



We supply and install  
Keysafes @ £75

RING VIDEO DOORBELLS  
& CAMERAS installed  
- price on application

RING FULL HOME VIDEO  
SECURITY installed  
- price on application

